



Weston & Crewe Green

Community

News



Spring 2025



Dear Residents,

Now that Spring almost upon us, we look forward to warmer sunny days and enjoying our surroundings.

By the time you receive this the installation of a complete new set of play equipment on the playing field in Mere Road will be complete and in use. This has been possible by a grant which has paid for the majority of the new equipment and by the work of the Playing Field Trustees – well done and thank you.

Enclosed with this edition is a short questionnaire and envelope for you to complete and return to the Parish Council. This information will help to inform and shape the new Parish Plan that is being compiled, to reflect and incorporate the Crewe Green area of the parish.

There are also details of public exhibitions relating to the new Parish Plan, please do come along and contribute.

John Densem
Chairman of Weston & Crewe Green Parish Council

Got a story? Talk to us!

We want to hear from you with all your village news. If you've got an event, an article of local interest or a society or club to highlight, or photographs you've taken when out and about in the community.

Please get in touch by emailing:
westonandbasfordcommunityne
ws@gmail.com

Parish Council

For up-to-date information, agendas and minutes for *your* Weston & Crewe Green Parish Council please visit:

www.westonandcrewegreen-pc.gov.uk



Allotment news



At the time of writing (January), we are suffering from some very bad weather, what winds we have had! A visit to the allotment had revealed many posts and fences down and items blown onto neighbours' plots. There's some work for members to do when they return.

We are currently being selective with new member applications due to some ex-members leaving their plots in a poor state, having been informed that the plot was not up to standard. New members can start with a quarter or half plot and then progress to a full plot if they show they can fully utilise their plot.

Some members have now bought their seed potatoes and set them in boxes to chit (grow shoots), they will be planted in late March dependent on the weather. This is a good time to plan what you wish to grow, sometimes it's easier to buy plants than grow from seeds. We are fortunate to have some good nurseries in the area, Minshull, Peacock and the Secret Garden to name a few.

If you are interested in joining us then please send an email for more details to westonallotmentgroup@hotmail.com

Happy growing!

Mobile Library

The library van comes to Mere Road in Weston (10-10.25am) then onto Holly Mount, Basford (10.35-11am)

Every three weeks, on a Wednesday.

The next visits will be:

March 12th, April 2nd, April 23rd, May 14th, June 4th

To see other stops and dates then visit:

www.cheshireeast.gov.uk/libraries/nearest-library



NEIGHBOURHOOD PLAN – UPDATE

Since I reported in November last, much work has been taking place behind the scenes in relation to the Neighbourhood Plan.

Design Guidance for the Plan Area has now been completed, and Cheshire Wildlife Trust have produced their final report on ecology and wildlife.

In December new Planning Guidance was issued by Central Government (National Planning Policy Framework). This concentrates heavily on increasing housing provision. As a result, to ensure that our planning policies are as robust as possible, we felt it important as part of this exercise to produce a Local Housing Needs Appraisal for the whole of the Plan Area. This is currently underway and is being undertaken for us by Cheshire Community Action.

We're now at the stage where we need your help.

Enclosed in this issue of Community News is a simple questionnaire along with a pre-paid return envelope. We'd like you to take a few minutes to complete this and return it to us by Monday 7th April.

We're currently in the process of organising a walk-in exhibition in **St Michaels Church Crewe Green and Weston Church Hall.**

We'll be there to explain what a Neighbourhood Plan is all about and discuss any issues you may have.

The dates and times for the exhibition are:

**St Michaels Church Crewe Green - Thursday
27th March 3pm to 7pm**

**Weston Church Hall - Thursday 3rd April 3pm to
7pm**

This is your plan

Please let us have your views

Your help is much appreciated

John Cornell

Chair Neighbourhood Plan Steering Group
February 2025



Vacancies on the Parish Council: Being a Councillor

Weston and Crewe Green Parish Council needs four new team members; if you think you would like to join the Parish Council and support the area, and are over 18 years of age contact the Clerk by email at clerk@westonandcrewegreen-pc.gov.uk

What is a Councillor?

Councillors are elected to represent an individual geographical unit on the council, known as a ward, and we have vacancies in each of the three wards – Weston (1), Wychwood (2) and Crewe Green (1).

Councillors are generally elected by the public every four years, but there are four spaces available on the Parish Council at the moment.

What do Councillors do?

Councillors have three main components to their work.

1. **Decision making** - Through meetings and attending committees with other elected members, Councillors decide which activities to support, where money should be spent, what services should be delivered and what policies should be implemented.
2. **Monitoring** - Councillors make sure that their decisions lead to efficient and effective services by keeping an eye on how well things are working.
3. **Getting involved locally** - As local representatives, Councillors have responsibilities towards their constituents and local organisations. These responsibilities and duties often depend on what the Councillor wants to achieve and how much time is available, and may include:
 - Attending meetings of local organisations
 - Attending meetings of organisations affecting the wider community
 - Taking up issues on behalf of members of the public

How much time does it take up?

Quite often Councillors say that their duties occupy them for about an hour a week. Obviously, there are some Councillors who spend more time than this - and some less, but in the main, being a Parish Councillor is an enjoyable way of contributing to your community and helping to make it a better place to live and work.

As a Councillor representing your community, ideally living within the ward area that you would like to represent, you will help keep it a great place to live and work. You will be supported in your role and training will be provided. You should have a positive outlook and a can-do attitude and be willing to work as part of a team. If, after reading this notice you are interested in applying, please contact the Clerk to the Council using the above details.



All Saints' Church Improvements

2024 proved to be a slightly frustrating year! Our church is Grade II listed and also sits in the centre of a Conservation area, so our much needed new heating system required Planning Permission as well as legal approval through the Church of England's 'Faculty' system. Submissions for both were initiated in January but it took until August for Cheshire East to agree to the Planning request and it was not until a couple of days before Christmas that the Faculty was agreed. We still need the final legal tick-off by the official 'Registrar', but this is expected imminently.

Removal of the old Victorian pipework will require temporary removal of the pews, which will allow us to repair the plaster where it has long been damaged and repaint all the walls (for the first time in over 40 years!) We also want to repair and insulate the ceiling, but unfortunately it looks as though we'll need further approvals which may preclude this work until a later date. On the more positive side, we now have permission to dispose of the 3 pews that were removed as a trial over 10 years ago – so if anyone would like a piece of Weston heritage, please get in touch as soon as possible.

Following the smart rebuild of the bellcote in 2023, we also now have permission to install a new clock in the vacant stone roundel just below the bell which should enhance the West face.

We are most grateful to the organisers of the Summer & Christmas fairs for donating proceeds to help fund all these works (as well as to all those who have donated personally). We're now in the process of obtaining final quotes, but it looks as though we'll still be facing a shortfall, so further fund-raising will be needed to keep our lovely building in the best condition.

If anyone would like to know more, please get in touch. Many thanks for your ongoing interest and support.

Rob Galloway and Sue Moore (Church Warden at All Saints')



Scouts

14th South West
Cheshire

Join Us @ Weston Church Hall

Beavers: Ages 6 - 8 - Monday 5:30pm to 6:30pm

Cubs: Ages 8 - 10 - Monday 6:30pm to 8:00pm

Scouts: Ages 10 - 14 - Tuesday 6:30pm to 8:30pm

Follow Us



@14thSWC

gsl@westonandwychwoodscouts.org.uk

westonandwychwoodscouts.org.uk

Weston Village Playing Field

Work begins on new play equipment at Weston Playing Field in Weston



Building work is under way to create a brand-new play equipment circuit for children under 6 years old in Weston.

The Weston Playing Field project is a step closer now that the first items of play equipment are in place at the site in Mere Road, Weston.

The project, which is being funded by a £23,325.92 grant from FCC Communities Foundation, as well as a contribution from Weston and Crewe Green Parish Council, will provide a brand-new play circuit and play equipment once it is officially open this summer.

John Chambers, Chairman of Weston Playing Field Trustees is excited that the project is starting to take shape.

He says: “It’s great to see our vision for this vital community facility moving closer to reality. We are extremely grateful for the funding FCC Communities Foundation and Weston and Crewe Green Parish Council have given us and we’re looking forward to opening to the public. We plan to hold a ‘grand’ opening event in early summer to show off the new equipment.”

FCC Communities Foundation is a not-for-profit business that awards grants for community projects through the Landfill Communities Fund.

Richard Smith, FCC Communities Foundation senior grant manager, says: “It’s always nice to see something we have funded start to take shape. We’re delighted to be supporting such a worthwhile project and look forward to it benefitting young people across Weston.”



Wychwood Village Hall

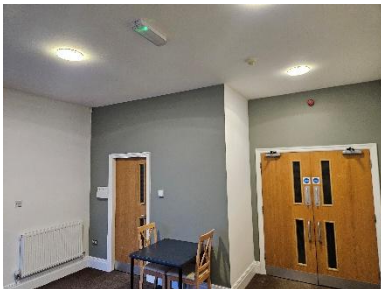
Located at the entrance to Wychwood Village in Weston
Abbey Park Way, CW2 5TD

Wychwood Village Hall offers a range of regular classes and activities for adults and children. It is a popular venue to host your child's birthday party or ideal for your AGM or business meeting. It has free Wi-Fi, a large open hall, parking for 18 cars, kitchen, basic service bar, tables and chairs and full disabled access. The hall can easily accommodate a bouncy castle, DJ, band or other activities.

If you are interested in casual hire of the hall visit the website at www.wychwoodvillagehall.co.uk and view the up-to-date booking calendar, fill out and submit the online booking enquiry form and a member of the committee will then contact you. The casual booking rate for the hall is £27 per hour. Regular bookings get a discounted rate from £17 per hour, contact the hall through the website for more info.

A fresh coat of paint for the hall

*A big thank you to **Chris Lester from CJL Décor** who repainted the hall. We couldn't be more pleased with the fresh, clean look and the professional job he completed. We would highly recommend his work. For more information he can be contacted on **07739 071265**.*



New classes at Wychwood Village Hall

Keikoba Shukokai Karate & Self Defence

Dave Bowler is offering Karate training for beginners to advanced, children from 6 years, teenagers, adults and families.

Saturday 10:30am – 11:30am

Children from 6 - 12 years – mixed grades.
Beginners and families very welcome, with
4 FREE lessons in both classes.

Saturday 11:30am – 12:30am

Mixed grades with extra training for all age groups. Senior Black belt instruction in both classes. For more information about private classes at home or with hall hire, please contact Sensei Dave Bowler on 07984 482264 or keikobashukokai@hotmail.com



Aura Pilates

Reformer Pilates

Curious about Reformer Pilates or seeking a more personalised experience? I offer tailored 1:1 sessions designed to meet your individual goals—whether you're looking to build strength, improve mobility, or simply looking to try something new!

1:1 slots available:

- Every Friday at 4:30 PM, 5:30 PM, 6:30 PM
- 50-minute sessions. Price: £35

Book a session today and start your Pilates journey!

Contact Carly

- Email: carlyetchells@yahoo.com
- Facebook:

<https://www.facebook.com/share/19ZL7r4tQN/?mibextid=wwXlfr>



Our other regular classes available at the hall include:

- **Feel Good Health & Fitness** (Wed 6-7pm & Sat 9-10am)
- **Kung Fu** – Jason (Wed 7.30pm – 9pm)
- **Gymnastics** (Thur 3.30pm – 7.30pm)
- **Dog ring training & scent craft** (Tue morning and evening)
- **Yoga** (Sun 9.45-10.45am)
- **Meditation & Reiki Sound Bath Healing** (Mon 7:30pm)
- **Baked treats** Email borntobakeyouhappy@outlook.com or 07990 072 458



For details on all our classes and events please scan the QR code or visit the website at www.wychwoodvillagehall.co.uk for details on all our classes and events.



Just for Fun!

European Cities

T	T	S	L	E	S	S	U	R	B
P	S	H	O	N	O	T	C	A	O
W	A	I	A	E	M	O	R	W	R
O	F	M	L	N	L	C	M	H	D
G	L	E	P	I	E	N	E	R	E
S	E	E	T	L	W	N	S	E	A
A	B	O	O	B	O	E	I	S	U
L	A	N	E	U	I	N	R	T	X
G	L	T	B	D	E	S	A	E	W
N	E	G	A	H	N	E	P	O	C

1. You can enjoy a walk on Las Ramblas Here.
2. This French city is noted for producing fine wines.
3. You can run with the bulls here.
4. It's wonderful, wonderful so the song says.
5. You can get an Eiffel here.
6. Have a Titanic experience here.
7. I'm sure you had some on your Christmas dinner.
8. The saying says all roads lead to here.
9. Two big football teams in this Scottish city.
10. The best Guinness in the world is sold here.



Weston

Village Fete

Sunday 18th May 2025

Come and join us this year at

Weston Village

Playing Field

Celebrate the grand opening of
the new play equipment!

Traditional stalls, BBQ and games

from **12 – 3pm**

ANSWERS TO THE WORDSEARCH:

1. Barcelona
 2. Bordeaux
 3. Pamplona
 4. Copenhagen
 5. Paris
 6. Belfast
 7. Brussels
 8. Rome
 9. Glasgow
 10. Dublin
- 16